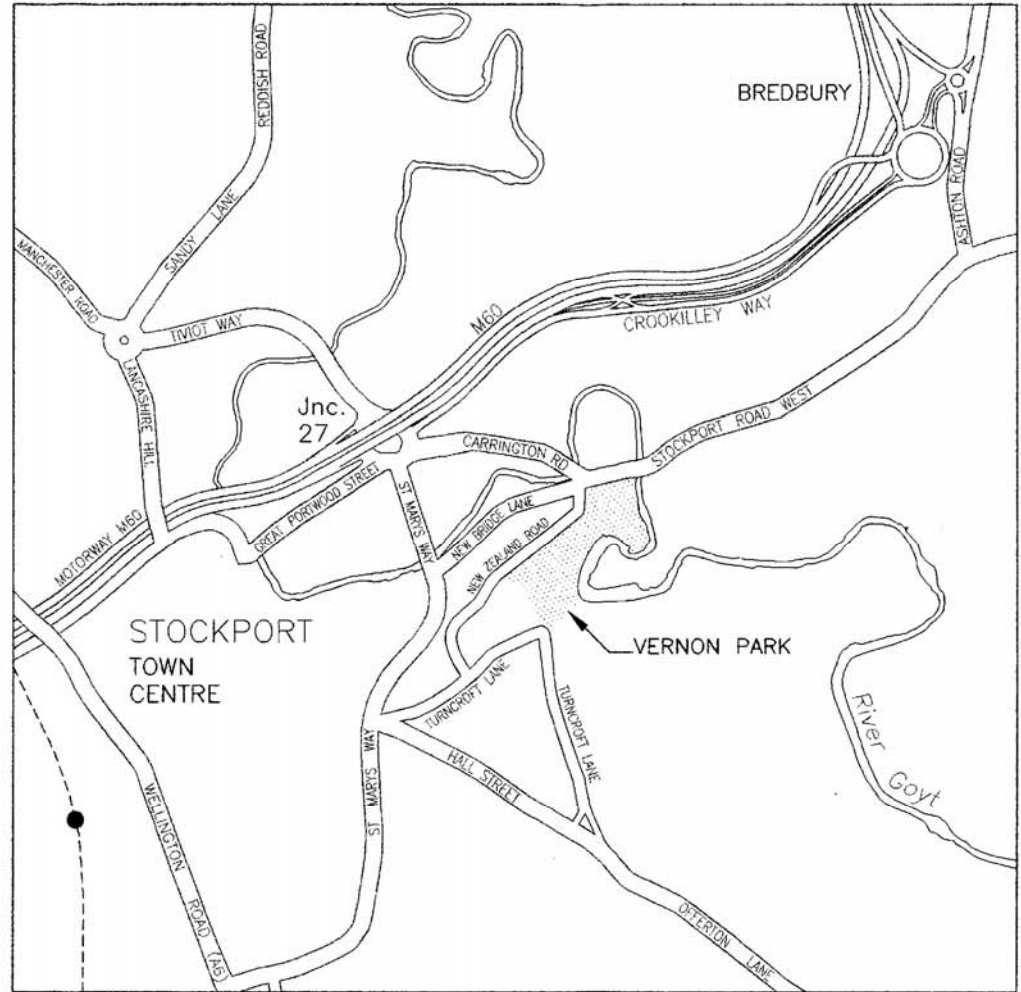
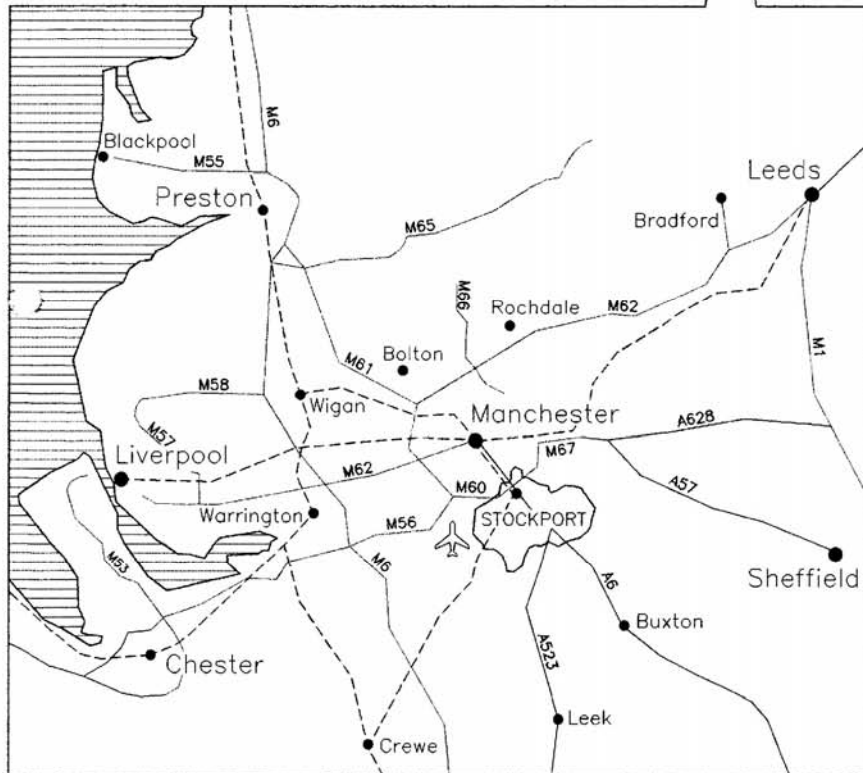
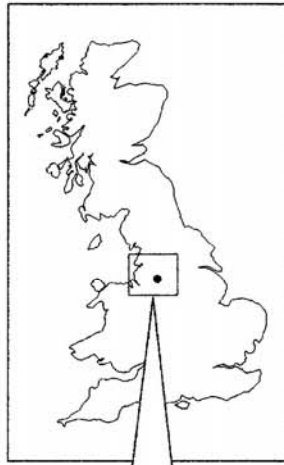


LOCATION PLAN

Stockport Metropolitan Borough is situated in the south east corner of Greater Manchester County. It lies between the industrial and commercial centres of the region and the unspoiled beauty of Derbyshire and Cheshire. A thriving community of almost 300,000 people, it is at the heart of a national and international communications network.



The national motorway network runs through the borough with the M60 going right into the town centre. All trains on the Manchester to London mainline call at Stockport and Manchester International Airport is just eight minutes drive away.

Vernon Park lies to the east of the town centre of Stockport where it occupies an irregular plot on the banks of the River Goyt.

KEY



TREES & WOODLAND



PATHS

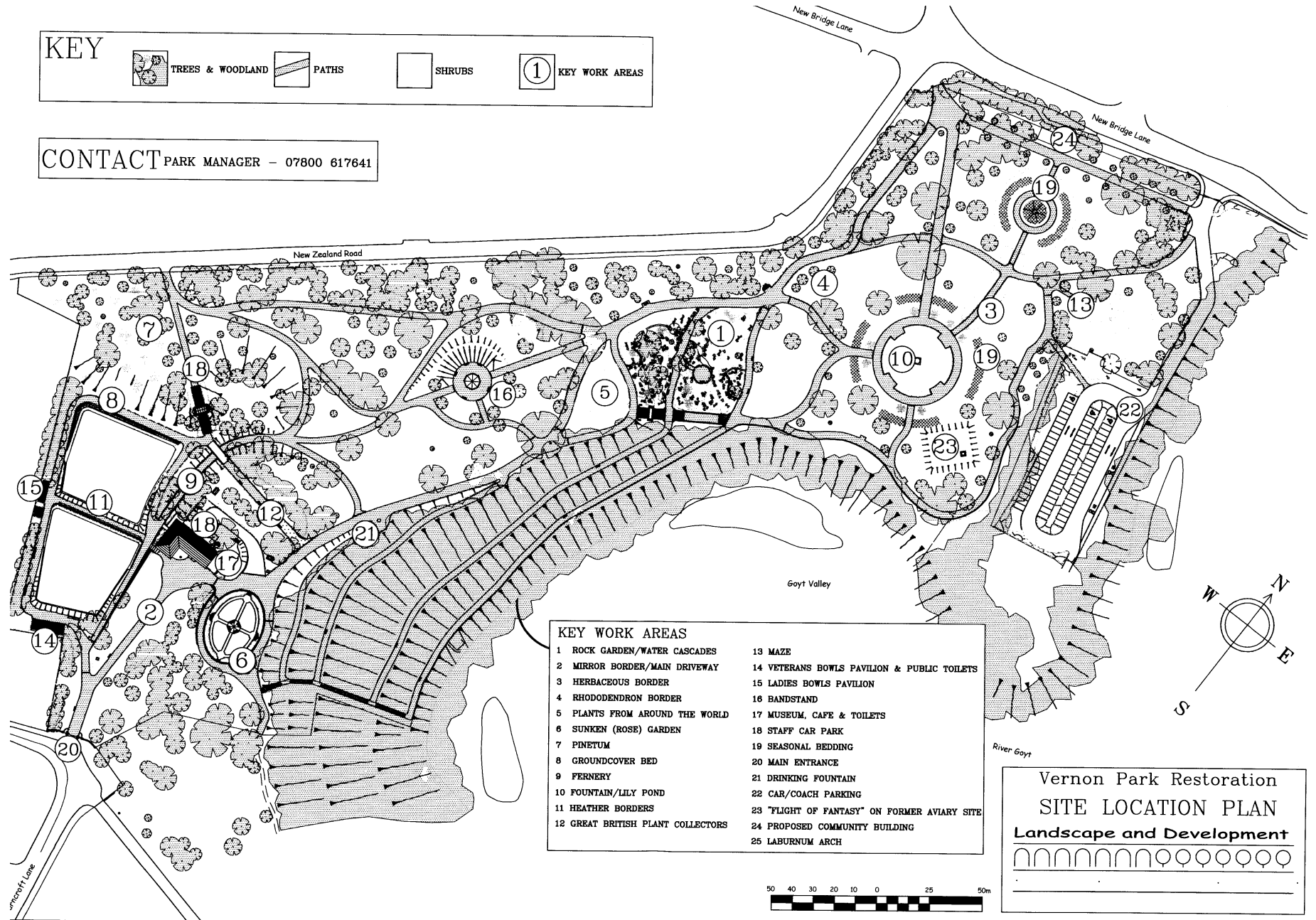


SHRUBS



KEY WORK AREAS

CONTACT PARK MANAGER - 07800 617641



KEY WORK AREAS

- | | |
|-----------------------------------|--|
| 1 ROCK GARDEN/WATER CASCADES | 13 MAZE |
| 2 MIRROR BORDER/MAIN DRIVEWAY | 14 VETERANS BOWLS PAVILION & PUBLIC TOILETS |
| 3 HERBACEOUS BORDER | 15 LADIES BOWLS PAVILION |
| 4 RHODODENDRON BORDER | 16 BANDSTAND |
| 5 PLANTS FROM AROUND THE WORLD | 17 MUSEUM, CAFE & TOILETS |
| 6 SUNKEN (ROSE) GARDEN | 18 STAFF CAR PARK |
| 7 PINETUM | 19 SEASONAL BEDDING |
| 8 GROUNDCOVER BED | 20 MAIN ENTRANCE |
| 9 FERNERY | 21 DRINKING FOUNTAIN |
| 10 FOUNTAIN/LILY POND | 22 CAR/COACH PARKING |
| 11 HEATHER BORDERS | 23 "FLIGHT OF FANTASY" ON FORMER AVIARY SITE |
| 12 GREAT BRITISH PLANT COLLECTORS | 24 PROPOSED COMMUNITY BUILDING |
| | 25 LABURNUM ARCH |

Vernon Park Restoration
SITE LOCATION PLAN
 Landscape and Development

